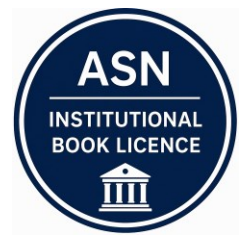
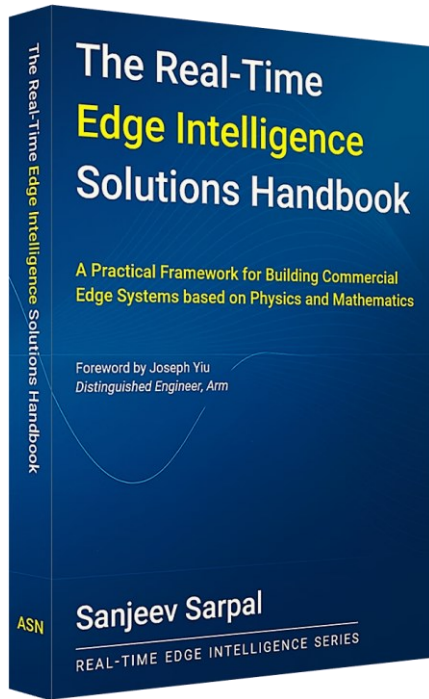


Preparing Engineers for the Era of Commercial Edge AI systems



A Practical Framework for Building Commercial Edge AI Systems Based on Physics and Mathematics



“A valuable resource for designing intelligent Edge AI systems”
Joseph Yiu, Distinguished Engineer, Arm

Overview

The Real-Time Edge Intelligence Solutions Handbook presents a practical engineering framework for designing commercial Edge AI systems. Building on the principles of **Real-Time Edge Intelligence (RTEI)**, it integrates Digital Signal Processing (DSP), intelligent data conditioning, Artificial Intelligence (AI), mathematical modelling and engineering best practices into a unified methodology for developing reliable, explainable and verifiable intelligent embedded systems.

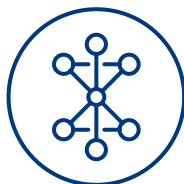
Written from a commercial systems perspective, the handbook provides software and system architects, product designers, researchers and postgraduate students with a state-of-the-art overview of modern design methods, toolchains and workflows for developing Real-Time Edge Intelligence solutions on Arm-based processors.



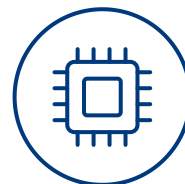
Sensors & Data



DSP Algorithms



AI/ML Techniques



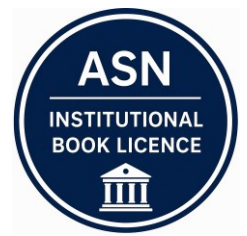
Arm processors



IEC/ISO standards

ASN Institutional Book Licence

The *Real-Time Edge Intelligence Solutions Handbook* is available under the **ASN Institutional Book Licence** for universities, research institutes and R&D organisations.



Licence Includes

- ✓ One printed edition of the handbook
- ✓ Perpetual institutional PDF (eBook) licence
- ✓ Unlimited access for authorised users
- ✓ Organisation-specific watermark
- ✓ Searchable, highlightable and printable PDF

Suitable For

- ✓ University libraries
- ✓ Engineering departments
- ✓ Research institutes and groups
- ✓ MSc and PhD programmes
- ✓ R&D organisations



Benefits

- ✓ One-off institutional purchase
- ✓ Perpetual licence with no annual renewal fees
- ✓ Supports teaching, research and self-study
- ✓ Ideal as a departmental or library reference

About the Author

Dr. Sanjeev Sarpal is an RTEI visionary and expert in signals and systems with a track record of developing over 26 commercial products. He is a Distinguished Arm Ambassador and leads ASN's Edge Solutions team, advising top international blue-chip companies on their AIoT/RTEI strategies for I5.0, healthcare, smart grids and smart buildings.



More Information

